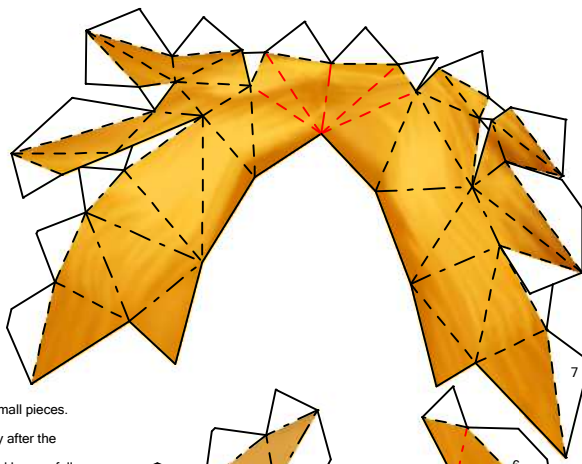




Link

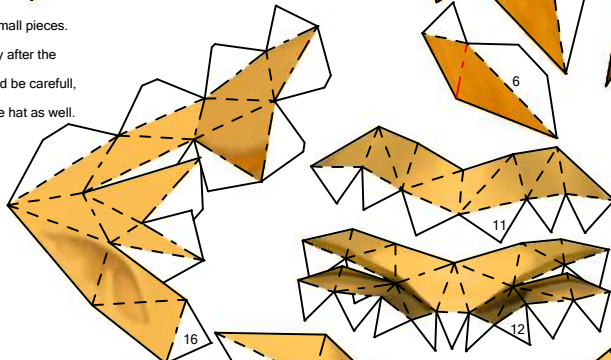
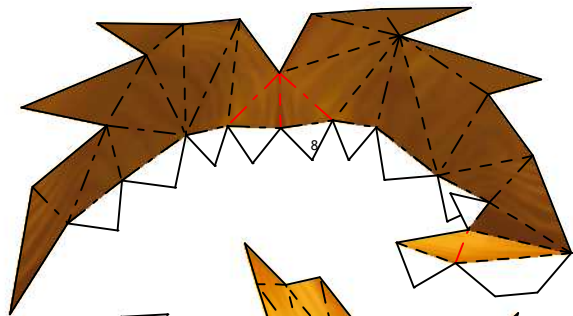
Model by Brandon

Build by Luis



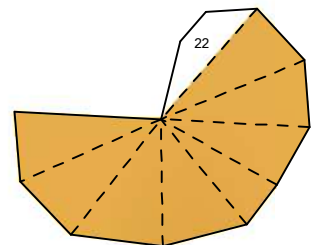
The face has some small pieces.
Connect the ears only after the
entire face is built, and be carefull,
some tabs glue on the hat as well.

This is very important, join pieces 6 - 12
and only after join them together to the hat.



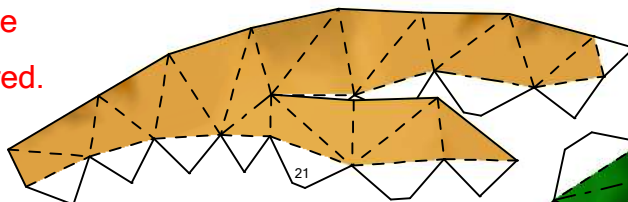
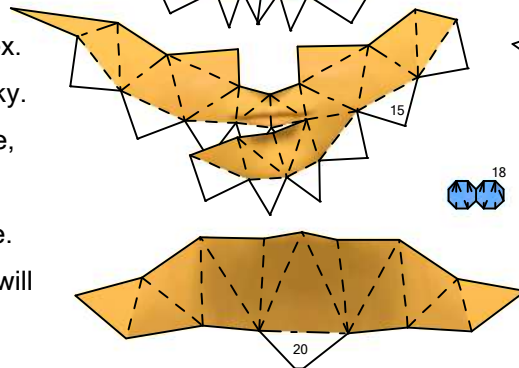
The hair is the most difficult part
of the model. Be really carefull with it,
specially when building the smaller
parts. Some parts must be fold and
they are indicated with red lines.

Cut pieces 18 and 19 with a right angle
and, with a little bit of glue, attach them
to the ears.

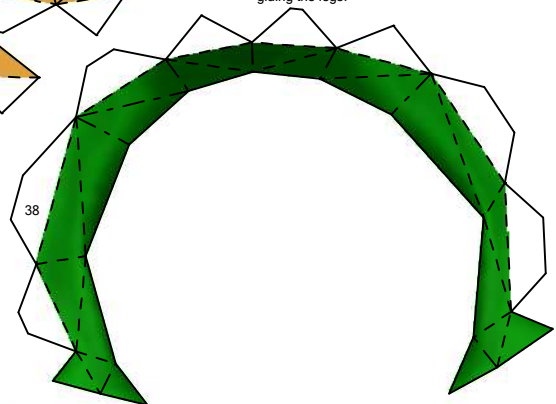
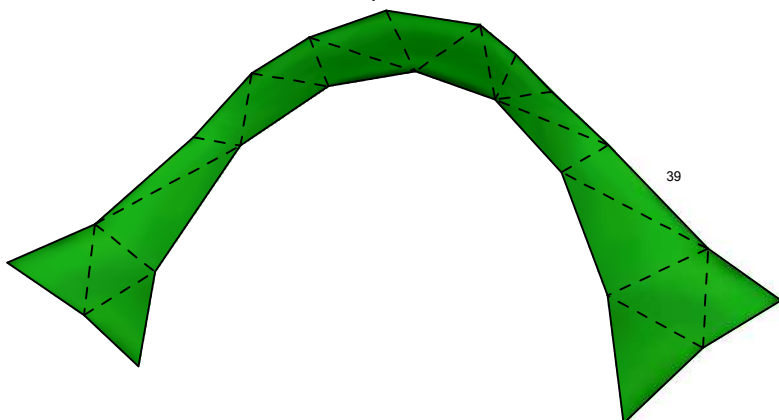


This model is really complex.
The head can be really tricky.
Make sure to take your time,
follow the numbers and the
instructions on the template.
Folding the lindicated ines will
also make it way easier.

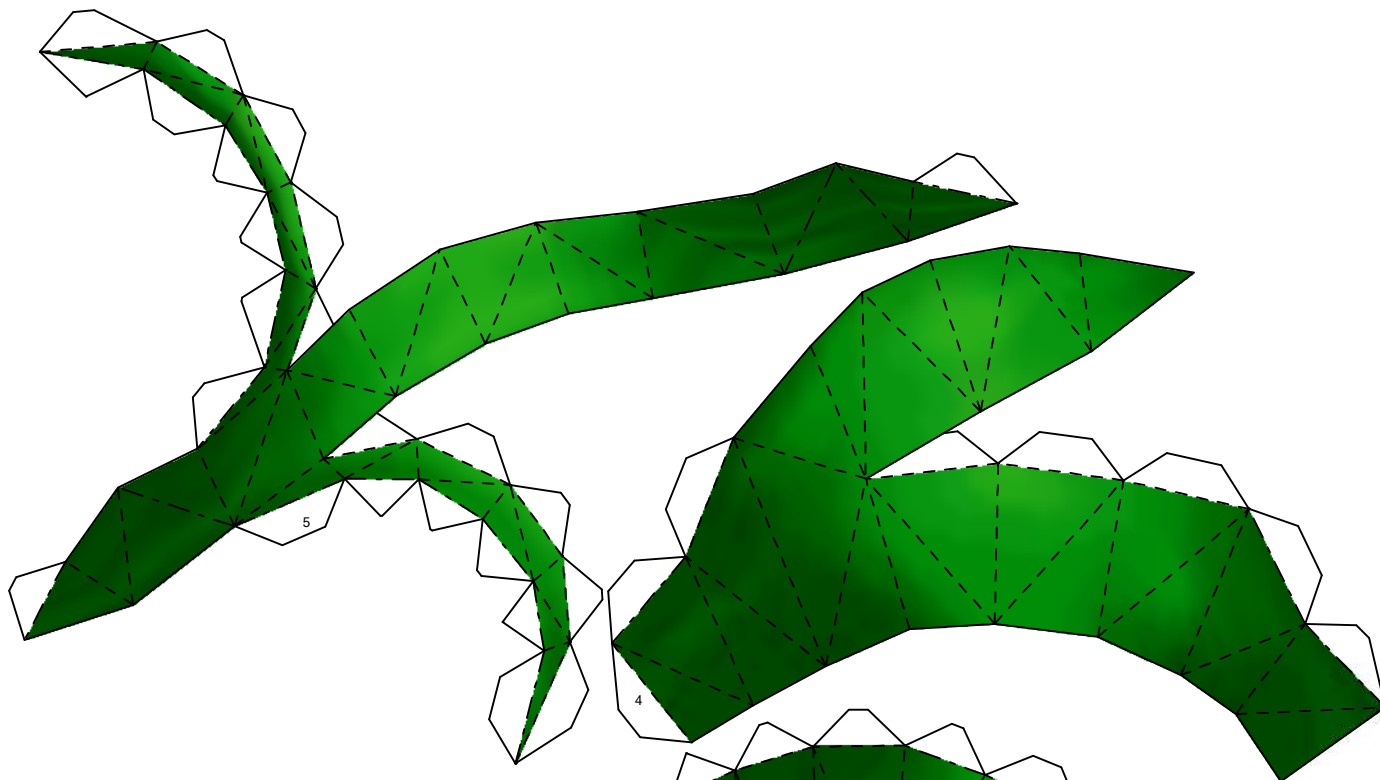
The lines that must be
fold are indicated in red.



Only glue the head to the torso after
the entire torso is built and before
gluing the legs.

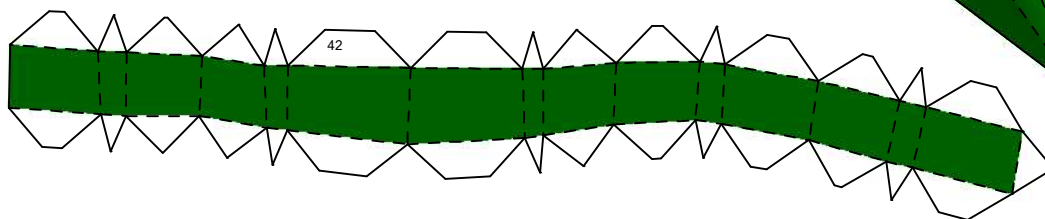
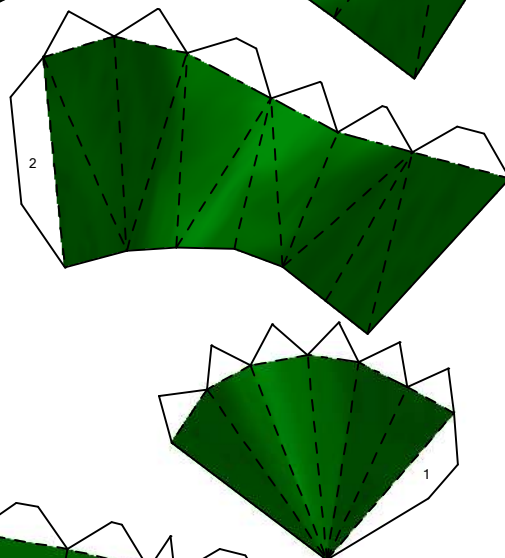


Glue the set 39 and 39 directly to the chest.
Use a little bit of glue on the tips and one
drop on the back of the set.

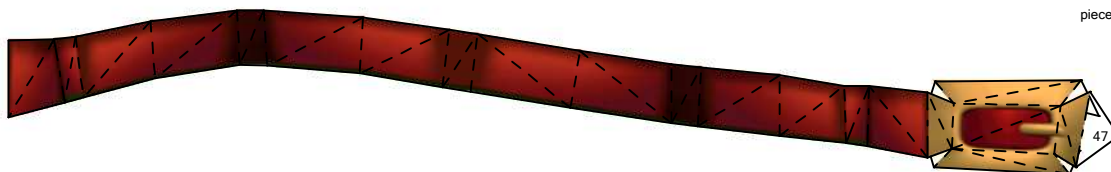


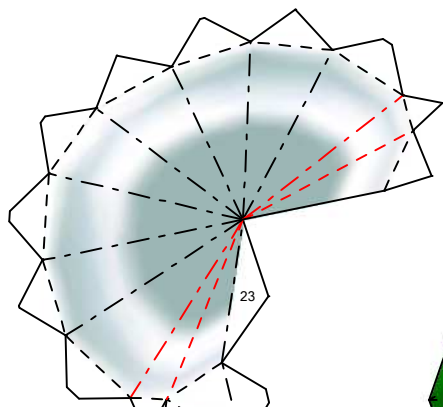
Start by the tip of the hat
and build by numbers untill
you close the head with piece 22.

Piece 42 goes directly behind the belt.
It connects to the top of the torso and
the skirt. Leave the belt loops unglued
untill the entire piece is connected to the
torso, after that connect them to the
respective tabs, be carefull to glue them
correctly so there's space to pass the belt.
Follow the tab line, the part with the tab
that connects to the other side of the piece
follows the same cut pattern of the pieces
connected to it.

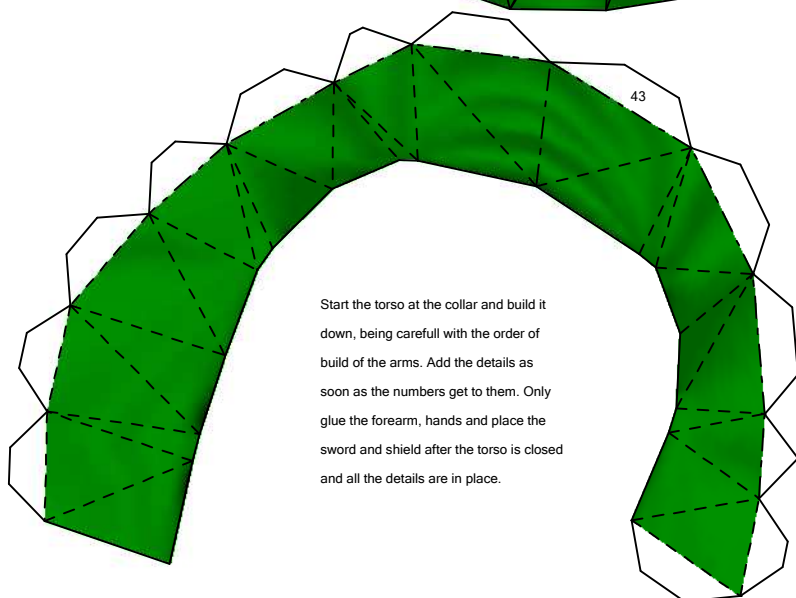
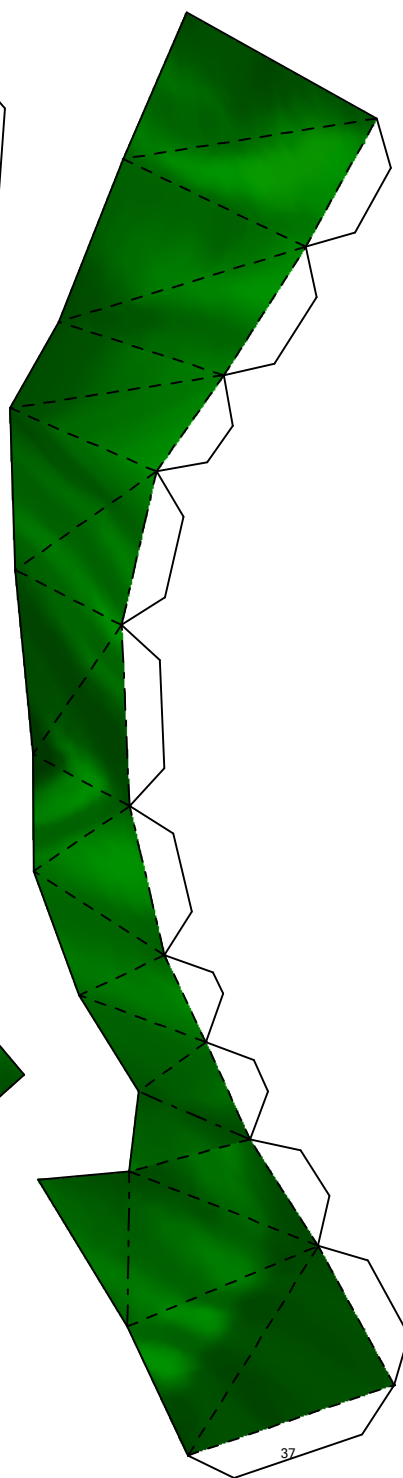
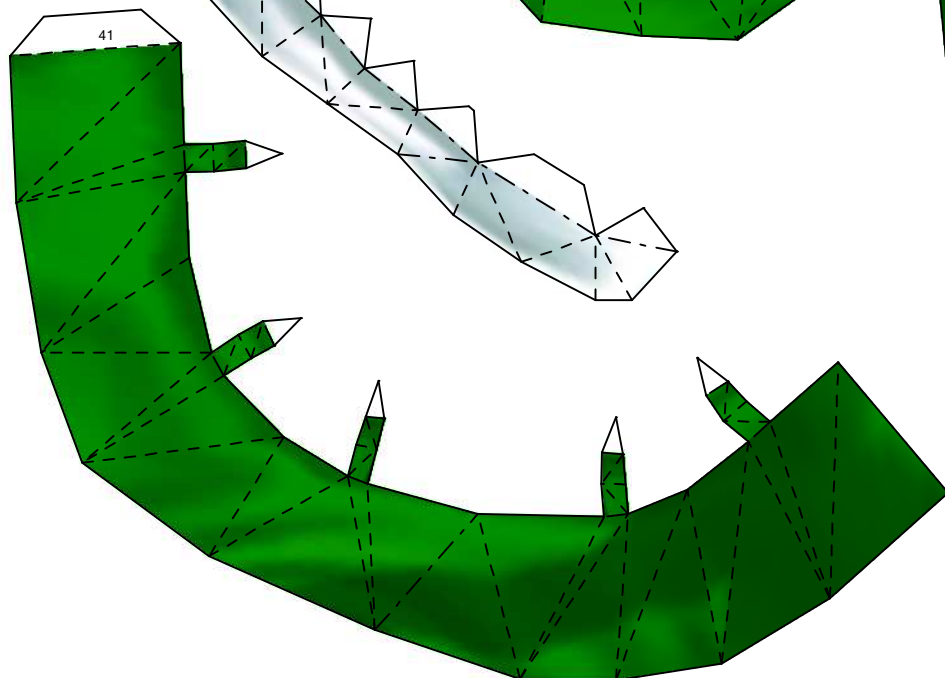
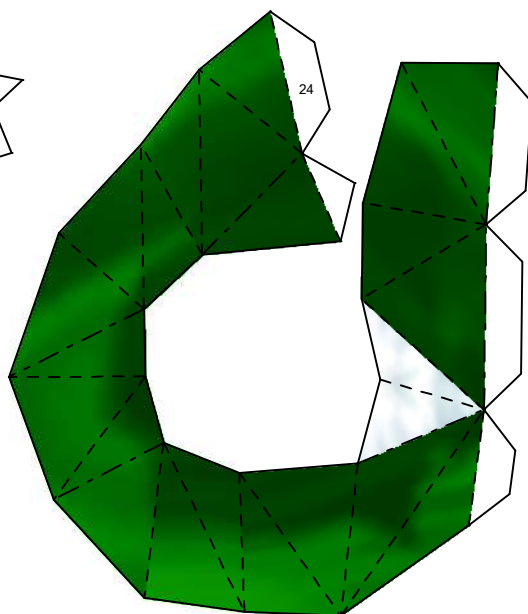


The last thing you'll connect on the chest
is the belt. Build the buckle and start
passing the belt by the belt loops.
Glue the buckle to the other side of the
piece after the entire belt is placed.



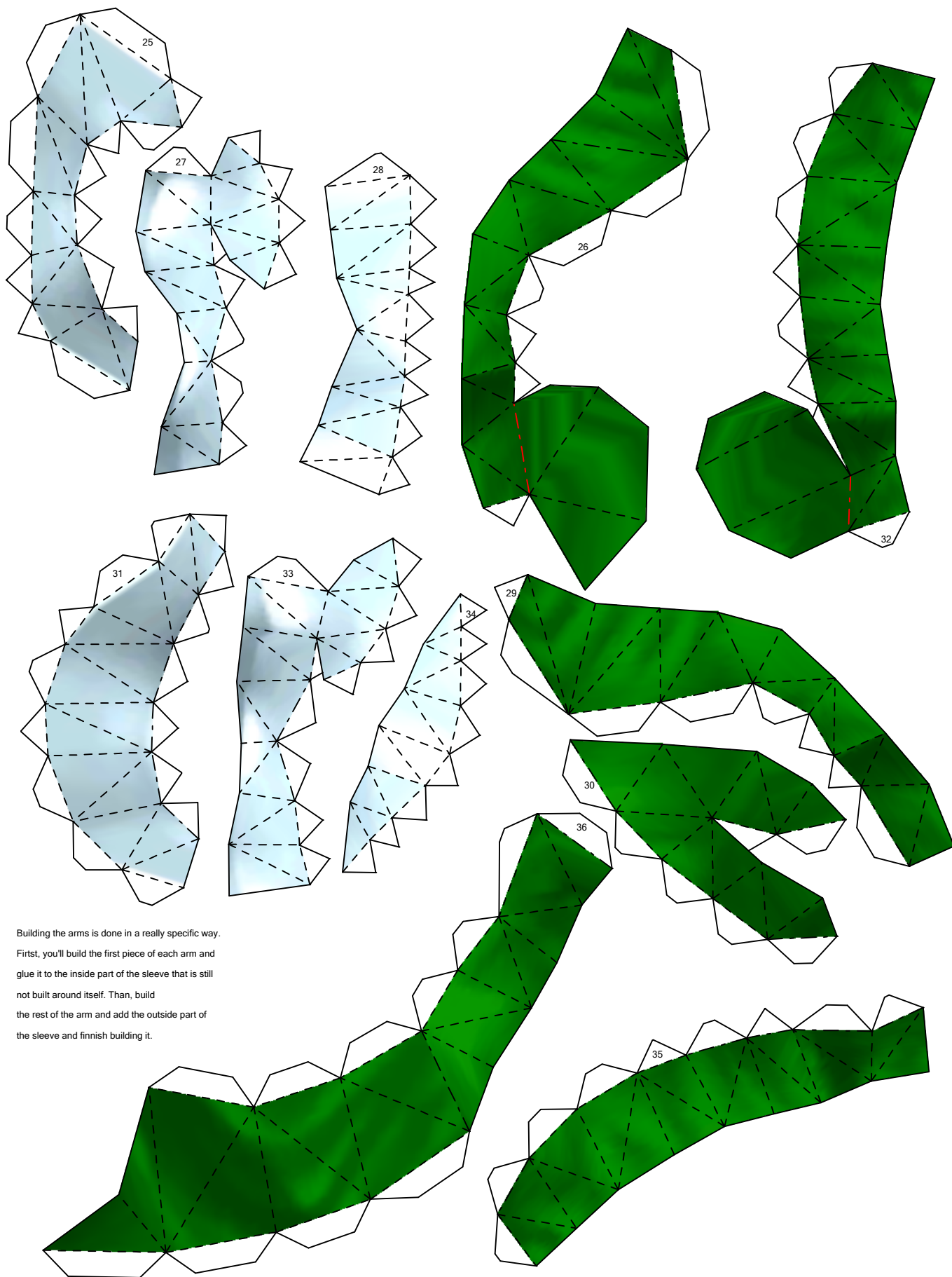


Glue piece 40
after the pieces
38 and 39 are glued.

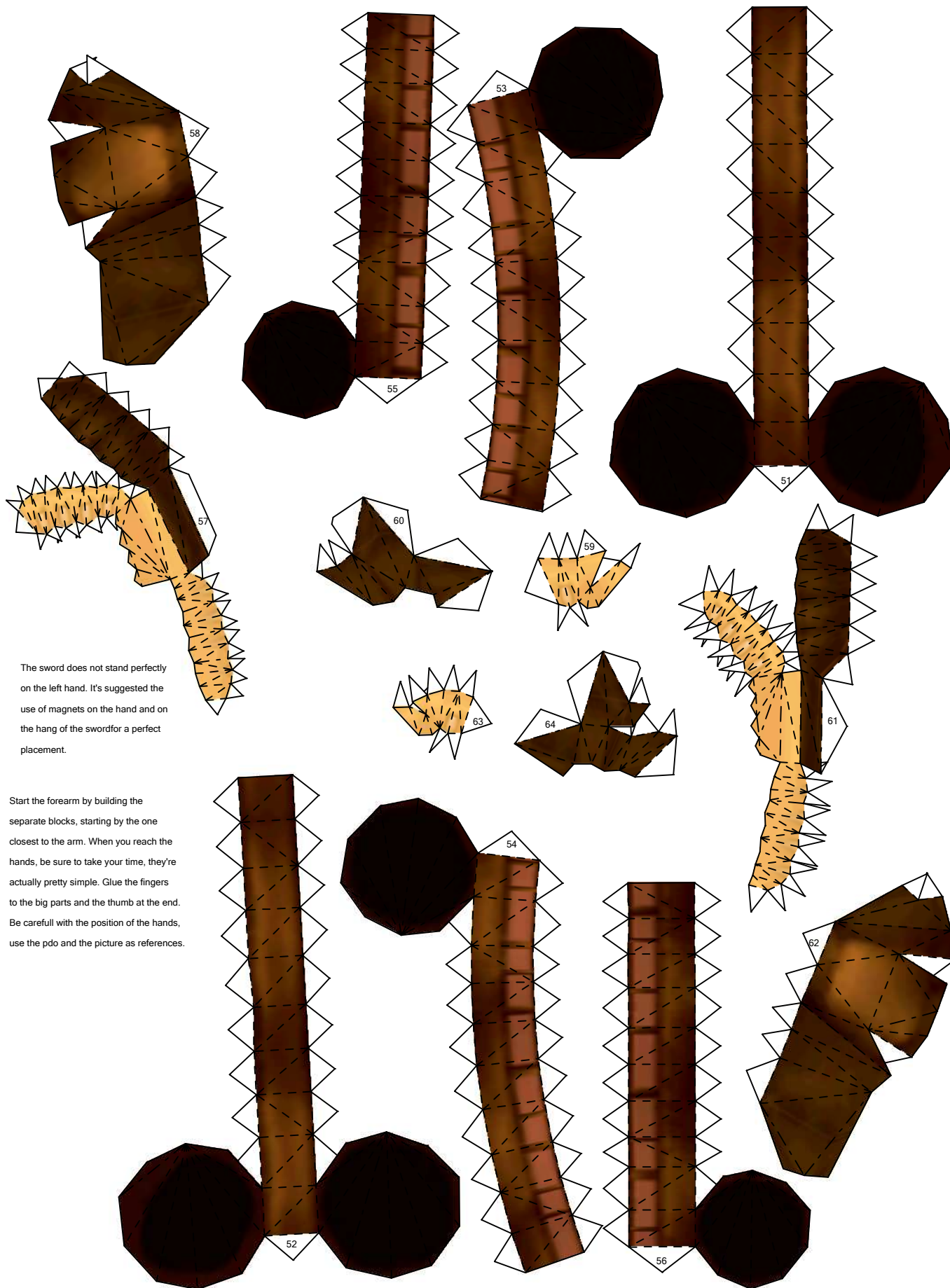


Start the torso at the collar and build it
down, being carefull with the order of
build of the arms. Add the details as
soon as the numbers get to them. Only
glue the forearm, hands and place the
sword and shield after the torso is closed
and all the details are in place.

Build piece 44 to itself and glue it right after
43 is glued. Follow the same order for pieces
45 and 46.



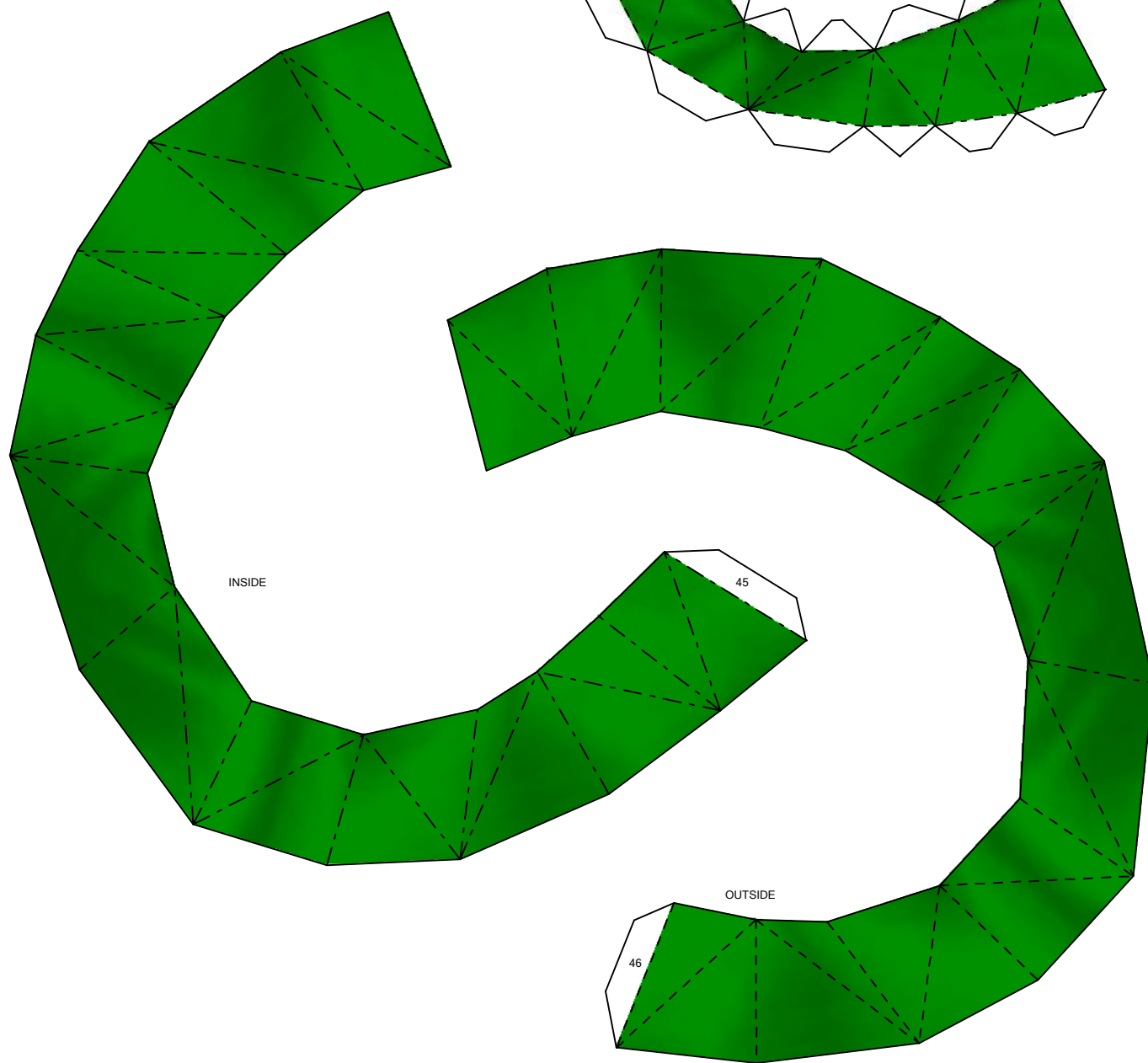
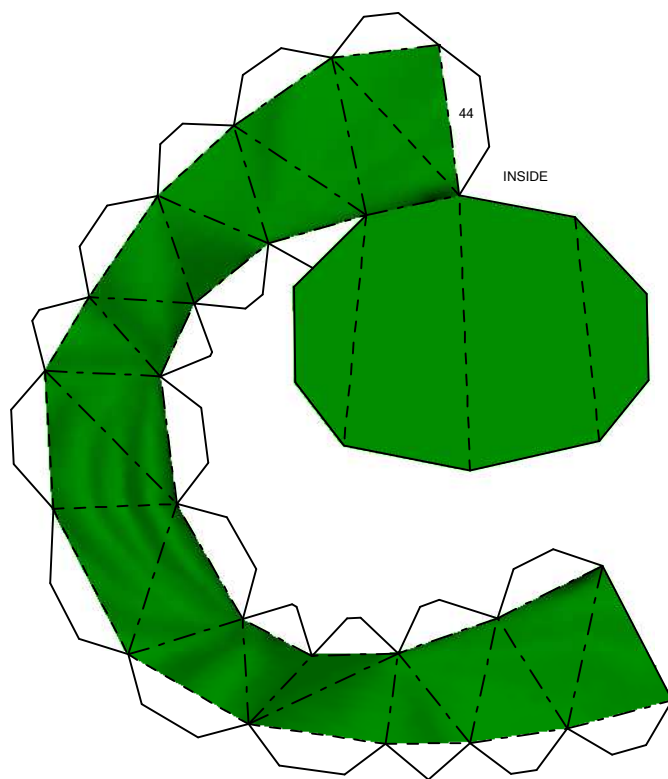
Building the arms is done in a really specific way. First, you'll build the first piece of each arm and glue it to the inside part of the sleeve that is still not built around itself. Then, build the rest of the arm and add the outside part of the sleeve and finish building it.

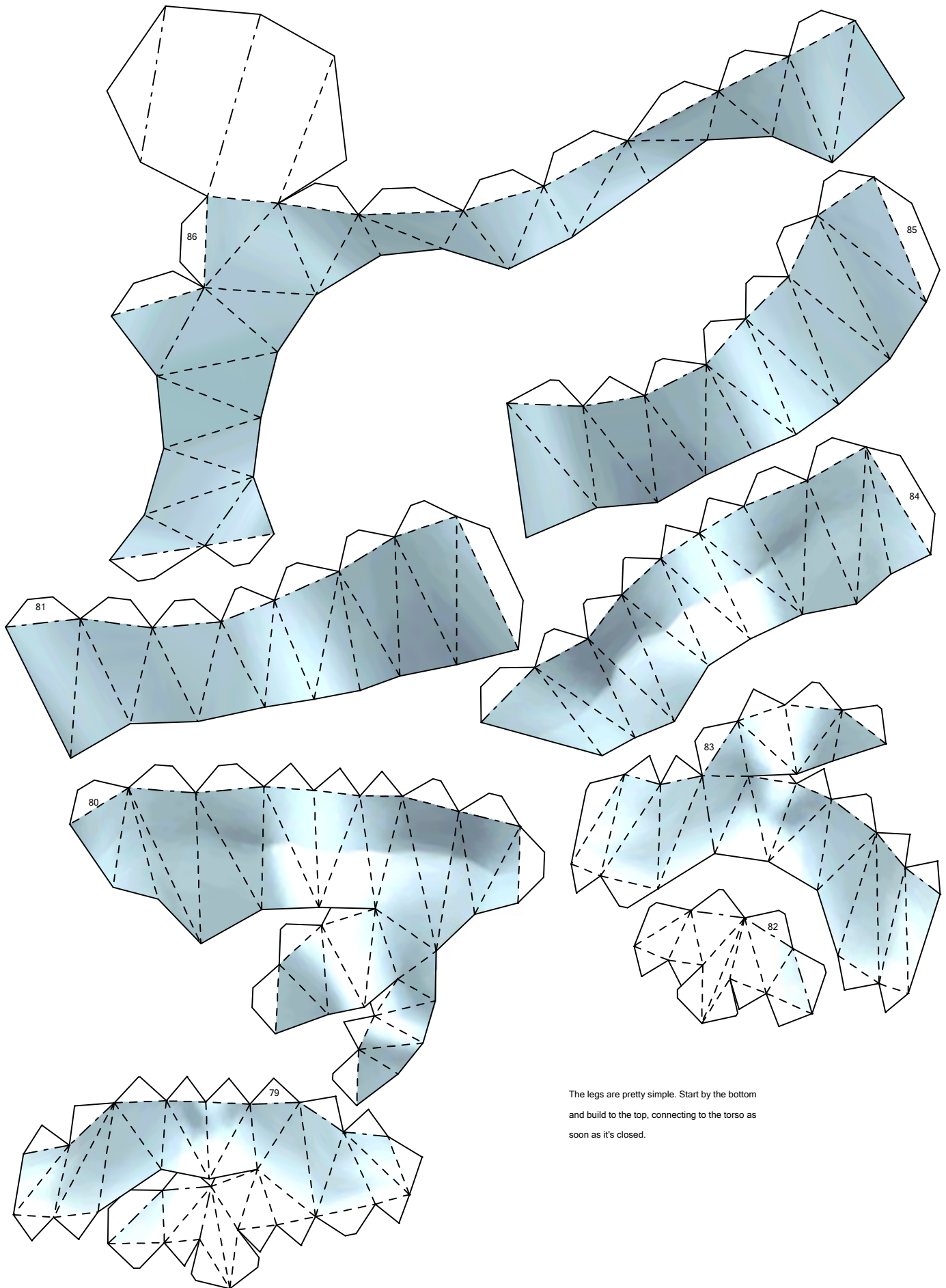


The sword does not stand perfectly on the left hand. It's suggested the use of magnets on the hand and on the hang of the sword for a perfect placement.

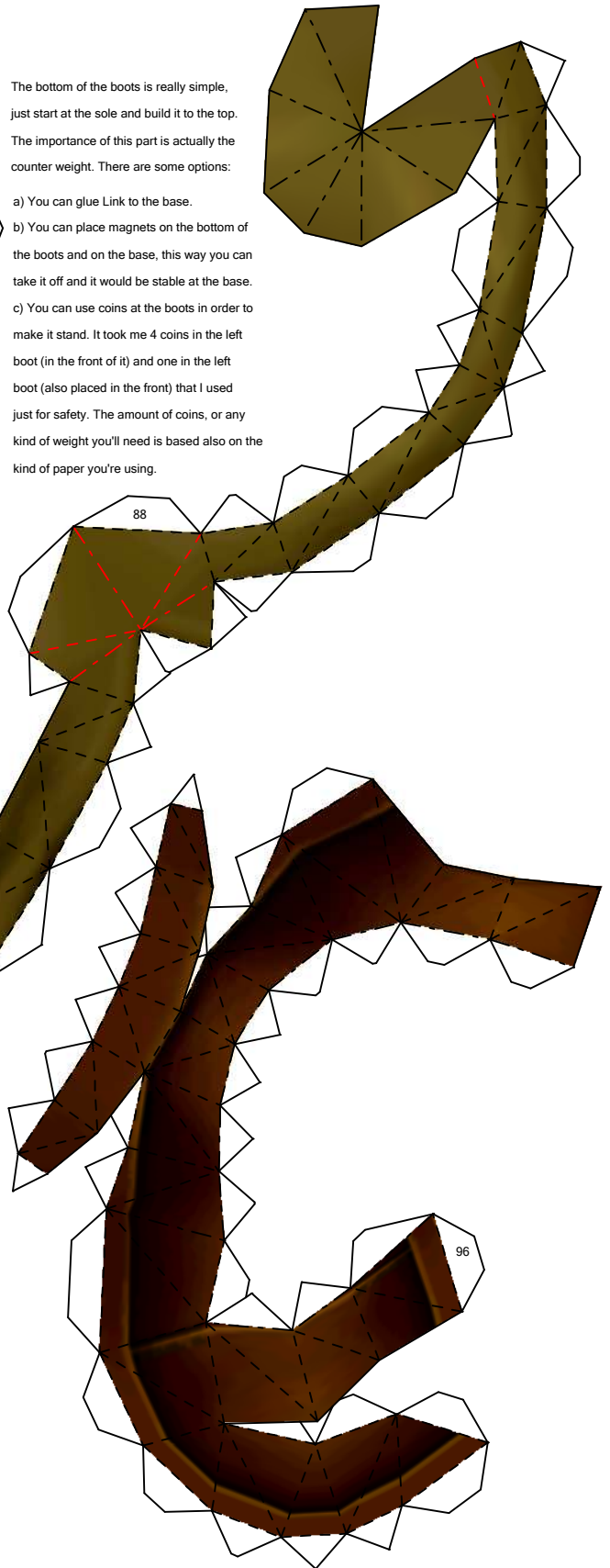
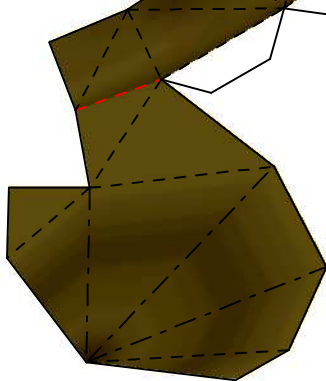
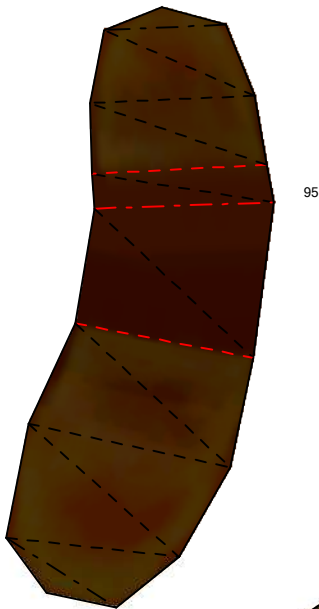
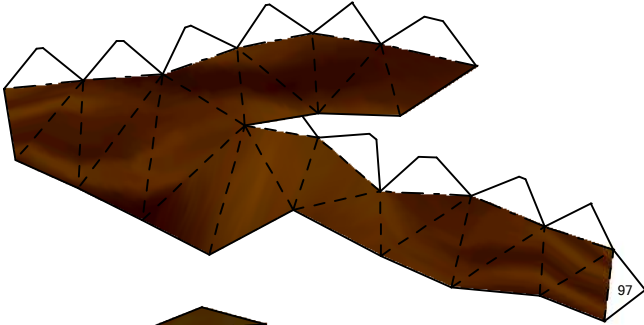
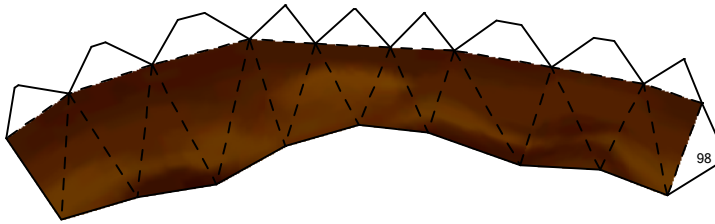
Start the forearm by building the separate blocks, starting by the one closest to the arm. When you reach the hands, be sure to take your time, they're actually pretty simple. Glue the fingers to the big parts and the thumb at the end. Be careful with the position of the hands, use the pdo and the picture as references.

Let the connection between the skirt and the legs dry for some time before continuing the build. Use a good glue and hold it in place for a while. I placed the model upside down so the glue wouldn't drain on the inside of the skirt.





The legs are pretty simple. Start by the bottom and build to the top, connecting to the torso as soon as it's closed.



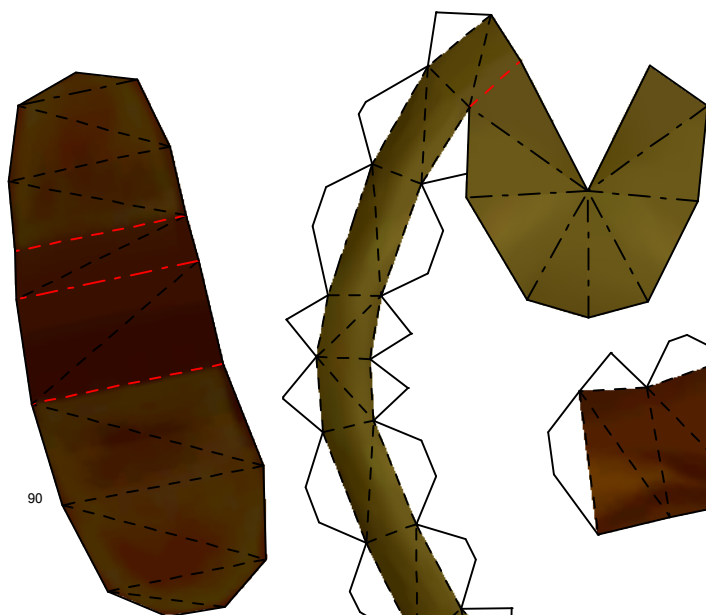
The bottom of the boots is really simple, just start at the sole and build it to the top. The importance of this part is actually the counter weight. There are some options:

- a) You can glue Link to the base.
- b) You can place magnets on the bottom of the boots and on the base, this way you can take it off and it would be stable at the base.
- c) You can use coins at the boots in order to make it stand. It took me 4 coins in the left boot (in the front of it) and one in the left boot (also placed in the front) that I used just for safety. The amount of coins, or any kind of weight you'll need is based also on the kind of paper you're using.

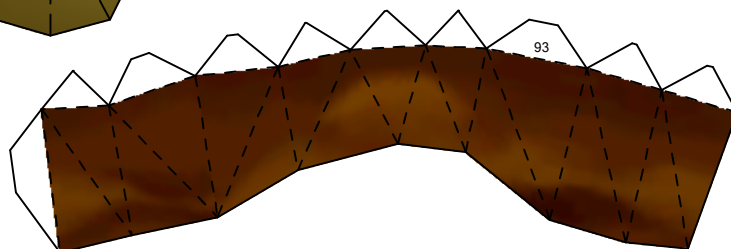


89

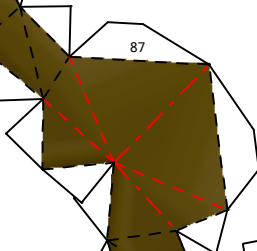
The top of the boots is pretty simple.
Start at the top and close at the bottom.
The buckle is glued directly to it using the
brown parts delimited by the red lines.
Glue both of them before attaching the
bottom of the boots.



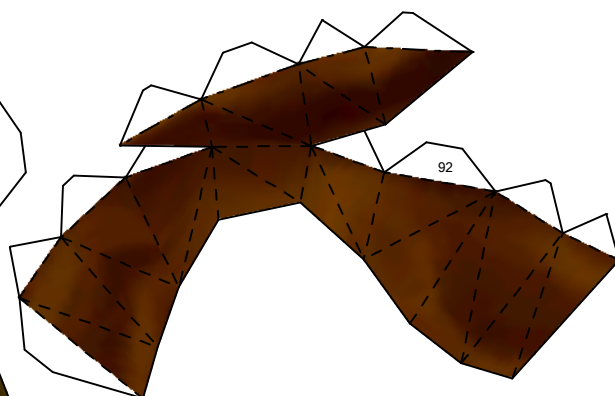
90



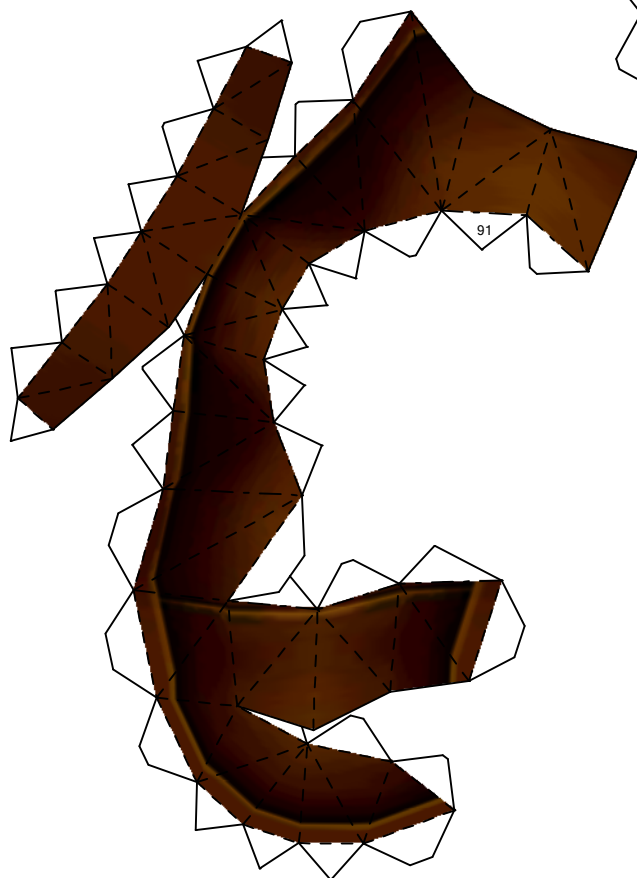
93



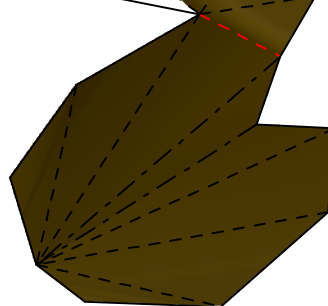
87



92

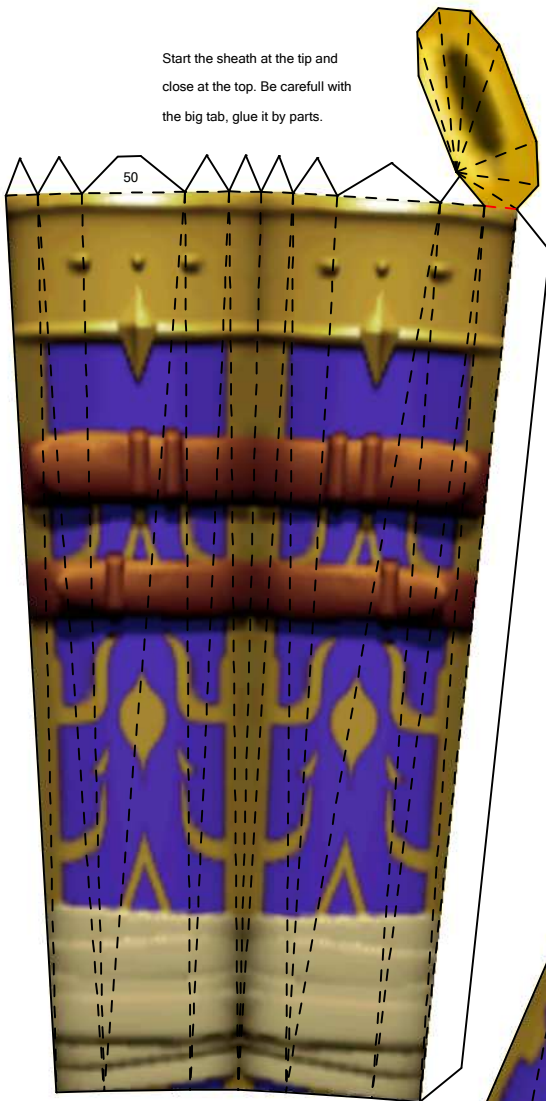


91

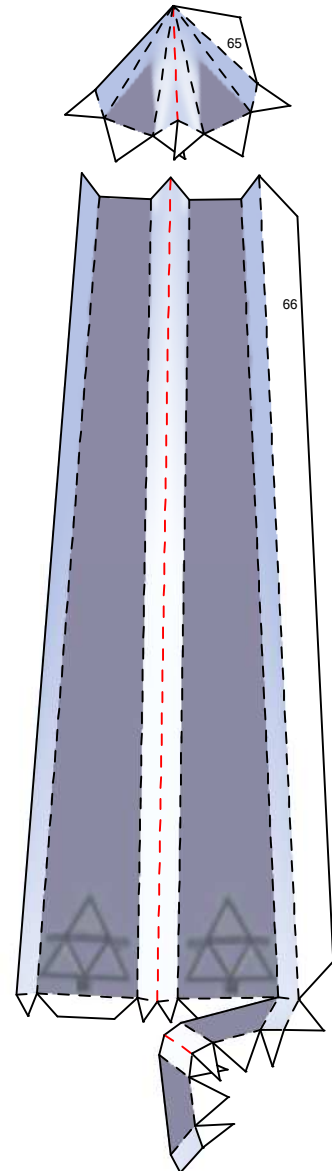


88

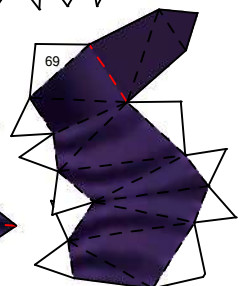
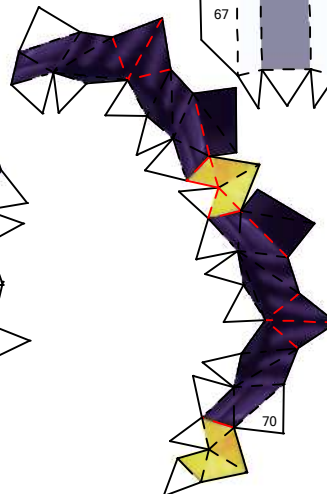
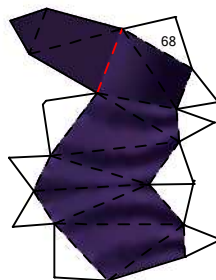
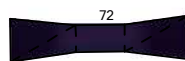
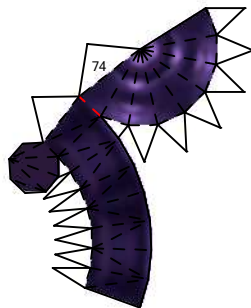
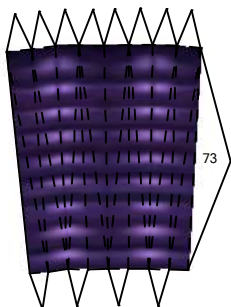
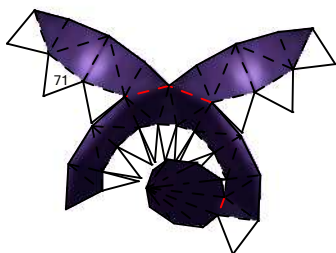
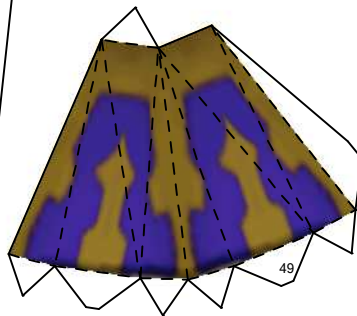
Start the sheath at the tip and close at the top. Be careful with the big tab, glue it by parts.

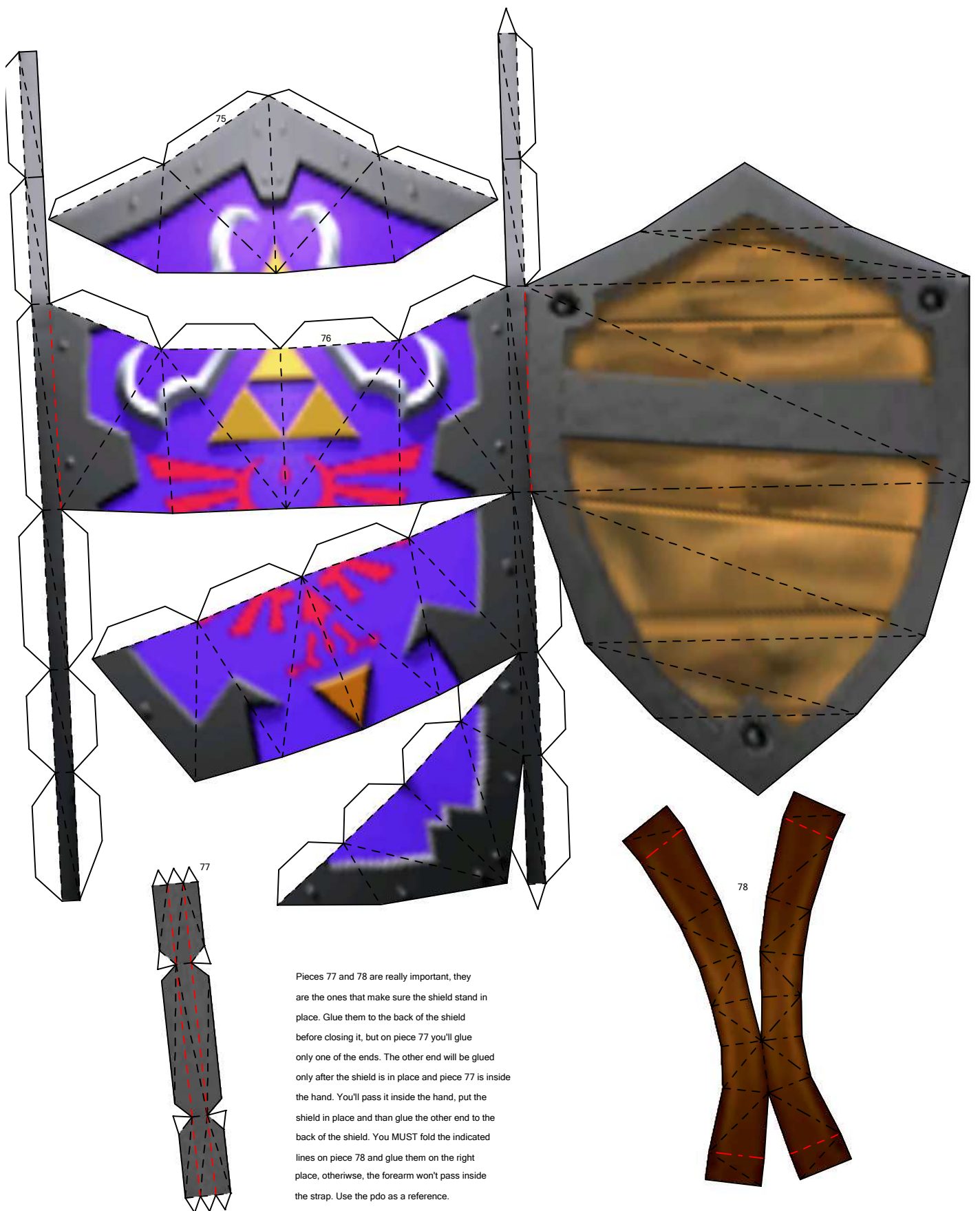


Start the blade at the tip and build it down. Be careful with the big tab of piece 66. Don't glue the entire tab at once, glue it by parts.

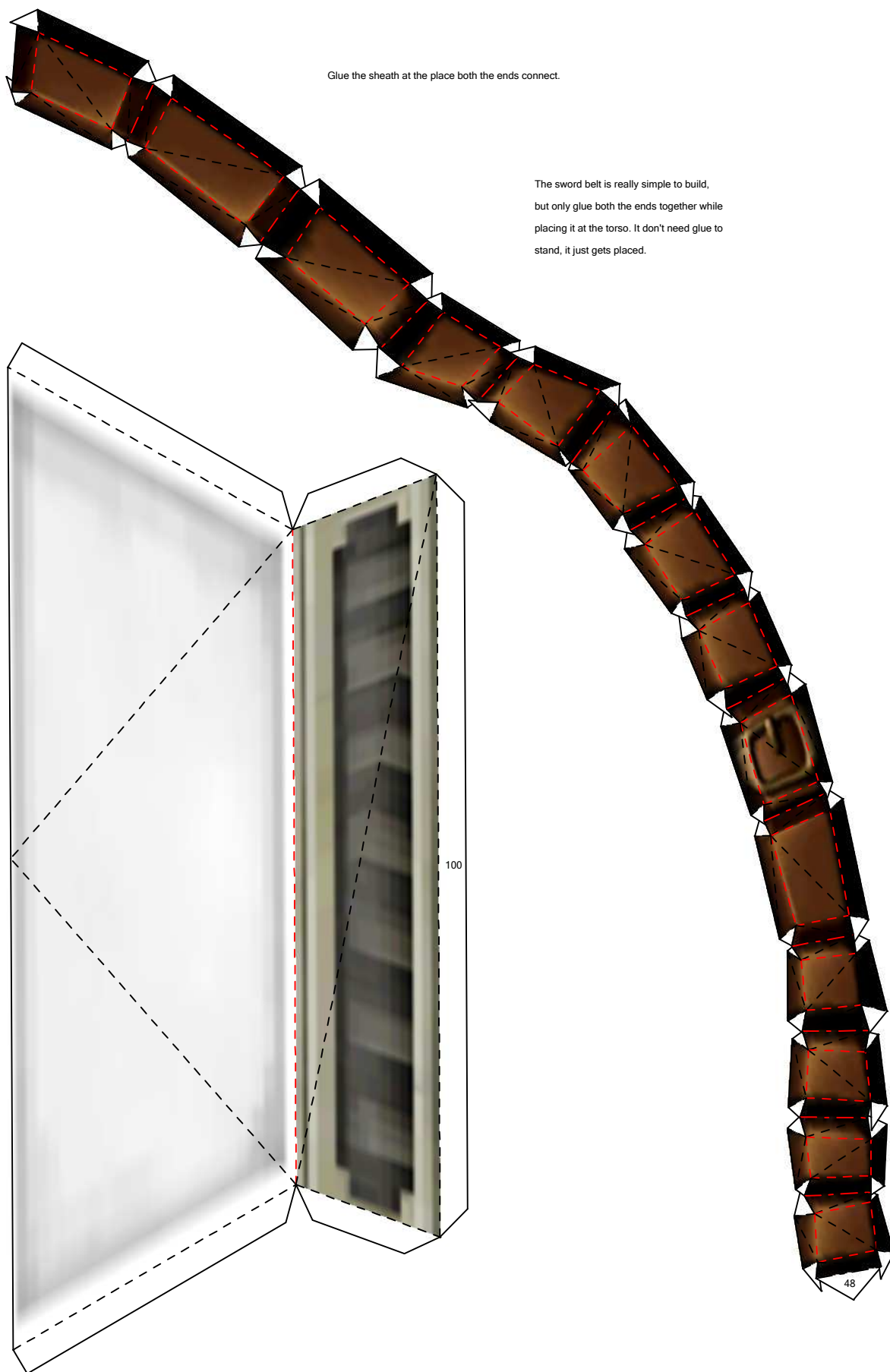


The blade of the sword is pretty simple. The hang can be more difficult if not built on the right order. Start by pieces 68 and 69, glue them to 70 and close this part of the hang with 73. The closing is the worst part. Be careful and make sure to fold the indicated lines. Glue piece 73 to 71 and 74 to 73. Piece 72 glue on the place where the blade goes. Glue it before to the hang and glue the blade on the top of it.





Pieces 77 and 78 are really important, they are the ones that make sure the shield stand in place. Glue them to the back of the shield before closing it, but on piece 77 you'll glue only one of the ends. The other end will be glued only after the shield is in place and piece 77 is inside the hand. You'll pass it inside the hand, put the shield in place and then glue the other end to the back of the shield. You MUST fold the indicated lines on piece 78 and glue them on the right place, otherwise, the forearm won't pass inside the strap. Use the pdo as a reference.



Glue the sheath at the place both the ends connect.

The sword belt is really simple to build,
but only glue both the ends together while
placing it at the torso. It don't need glue to
stand, it just gets placed.

THE BASE IS OPTIONAL

Start the base at the top and close at the bottom. The tabs are big, so don't glue the entire tab at once, glue it by parts.

99

